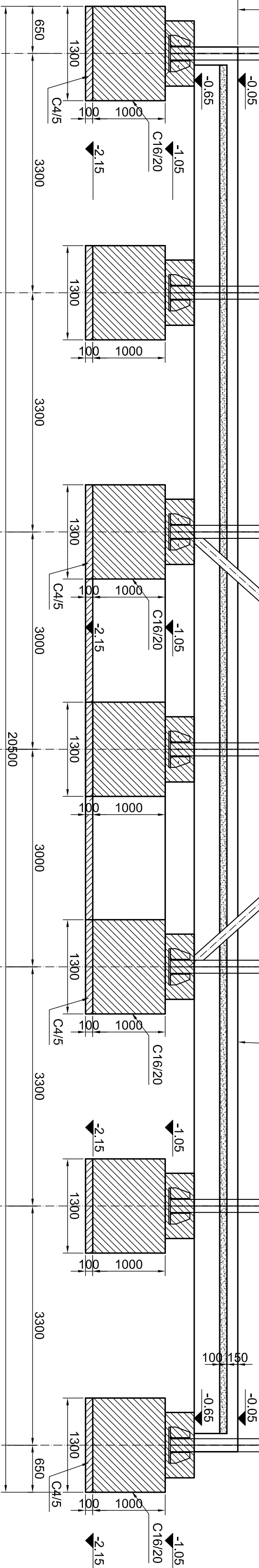


1:50



fiind de 0,7t (unde t=grosimea celei mai subțiri
piese).

3. Sudurile vor avea clasa de calitate II.

1. All linket items will be continuously welded, while

thickness).

painting.

3. The junctures will have second-th class quality.

OLT45 - 3K

Beton armat : C16/20

Ciment : CEM IIA-M32.5F

OLT4

OLT4

Reinforced Concrete: C16

Equalization concrete: C4/5

Cement : CEM II/A-M32.5R

CLASA DE IMPORTANȚĂ A CONSTRUCȚIEI CONFORM P100/92 ESTE ÎN

CATEGORIA DE IMPORTANȚĂ CONFORM HG nr. 166/9/ este (B)

THE IMPORTANCE CATEGORY, ACCORDING TO HG 766/97 IS "B"

[illegible]